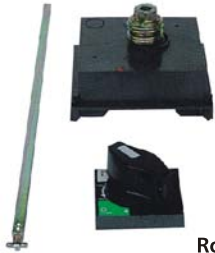


NS Series Moulded Case Circuit Breaker



Rotary handle

Rotary handle direct rotary handle

Degree of protection: IP40

Function:

- 1) suitability for isolation
- 2) indication of three positions 0(off) 1 (on) and tripped
- 3) press "push to trip" button, can trip-free
- 4) Visibility of and access to trip unit settings
- 5) the circuit breaker can be locked in the off position by one to three padlocks, diameter 5 to 8 mm(not supplied)

Extended rotary handle

Degree of protection: Ip55

Function:

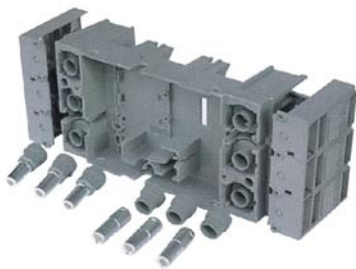
- 1) suitability for isolation
- 2) indication of three positions 0(off) 1 (on) and tripped
- 3) Visibility of and access to trip unit settings when the door is open
- 4) Door opening prevented when circuit breaker is on
- 5) The circuit breaker can be locked in the off position by one to three padlocks, diameter 5 to 8 mm (not supplied) .

Locking prevents opening of the switchboard door

Installation: Circuit breaker may be mounted vertically, horizontally or flat on their back without any derating of characteristics.

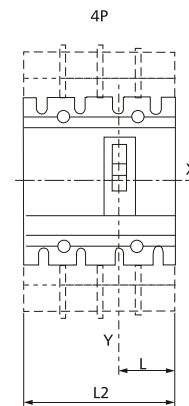
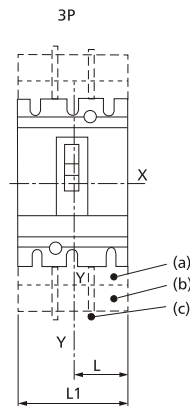
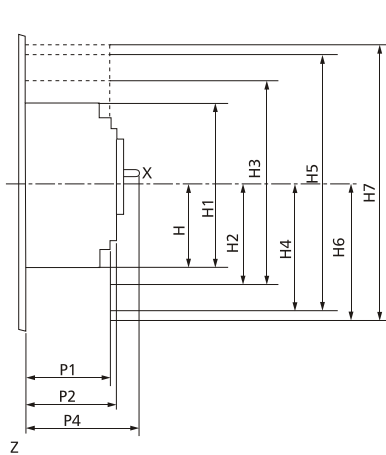
Fix: Mounting on backplate, mounting on rails

Connection: Front panel connection, black panel connection: plug-in connection

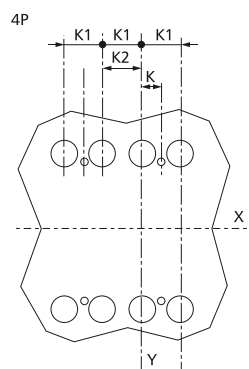
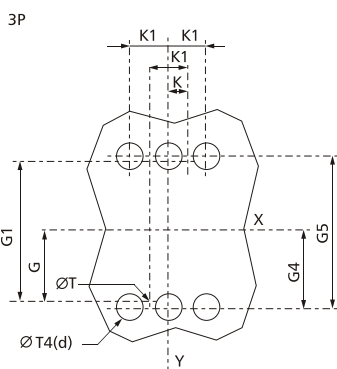


Plug-in base

Outline and installation dimension



Mounting on backplate



Mounting on rails

